

057846

RECEIVED
LARAMIE COUNTY
CHEYENNE, WY.

CERTIFIED LAND CORNER RECORDATION

89 MAY 30 AM 11:27

DESCRIPTION OF CORNER EVIDENCE FOUND, AND ORIGINAL RECORD (if known)

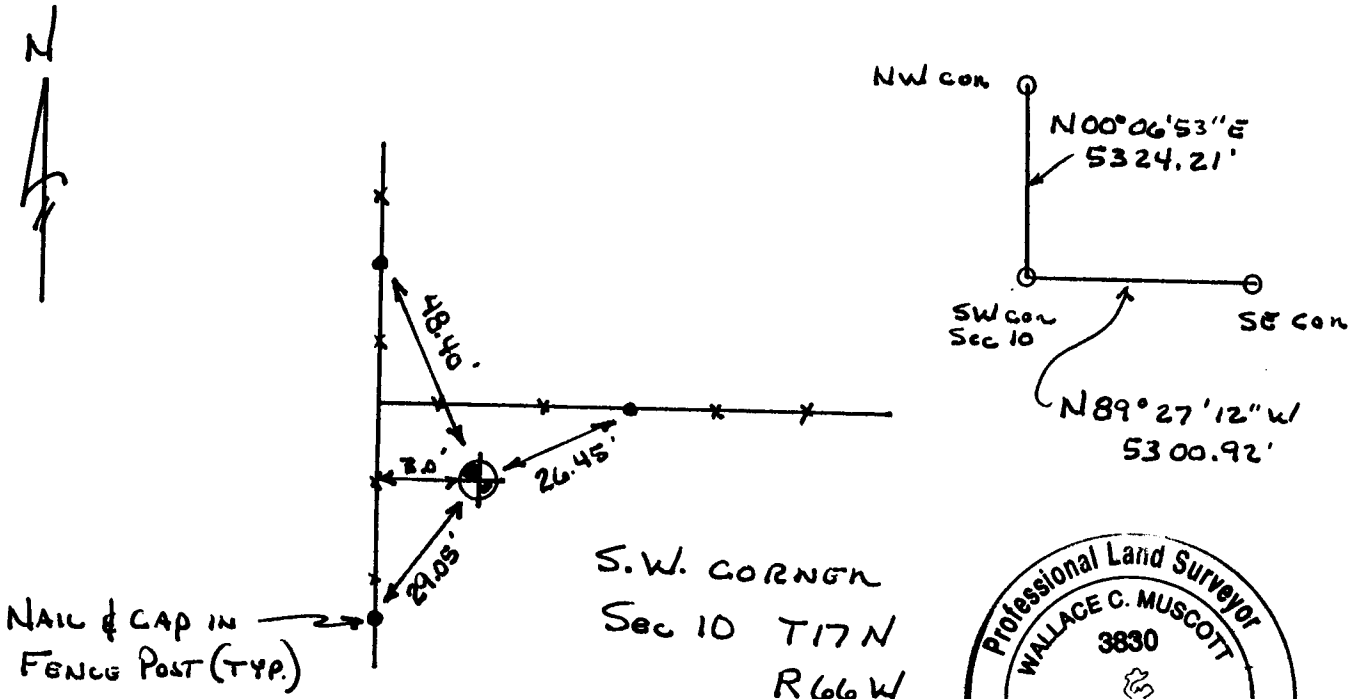
THIS IS AN UP-DATE TO THE MONUMENT RECORDATION I
FILED ON APRIL 27, 1988,

DESCRIPTION OF MONUMENT AND ACCESSORIES ESTABLISHED
TO PERPETUATE THE ORIGINAL LOCATION OF THIS CORNER:

I REPLACED THE ORIGINAL STONE WITH A CORPS OF
ENGINEERS BRASS CAP SET ON 5/8" X 30" REBAR. SET THE
ORIGINAL STONE ALONG S106. CAP STAMPED

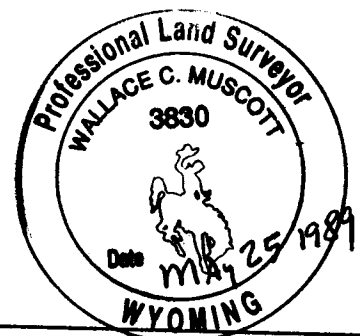
59 | S10
516 | S15
1989

SKETCH, WITH COURSE AND DISTANCE TO ADJACENT CORNER IF DETERMINED IN THIS SURVEY.
(May Sketch or Paste Reproduction on Reverse Side.)



NAIL & CAP IN
FENCE POST (TYP.)

S.W. CORNER
Sec 10 T17N
R66W



I, Wallace C. Muscott certify that I have carefully performed or reviewed the work
done on the diagrammed corner as reported on this recordation form and approve the same.

Wallace C. Muscott 3830
Signature of Surveyor Registration No.

STATE OF WYOMING,
Office of Clerk and Recorder,
County of _____

This "corner record" was filed for record on the _____ day of _____, 19____, was noted
on the cross-index plat and is assigned page No. _____, in book No. _____.

Janet C. Whitehead
County Official

Cross Index No. <u>J-13</u>	T. <u>17N</u>	R. <u>66W</u>	Mer. <u>6th</u>
_____	T. _____	R. _____	Mer. _____
_____	T. _____	R. _____	Mer. _____
_____	T. _____	R. _____	Mer. _____
_____	T. _____	R. _____	Mer. _____
_____	T. _____	R. _____	Mer. _____
_____	T. _____	R. _____	Mer. _____

BOOK 1274